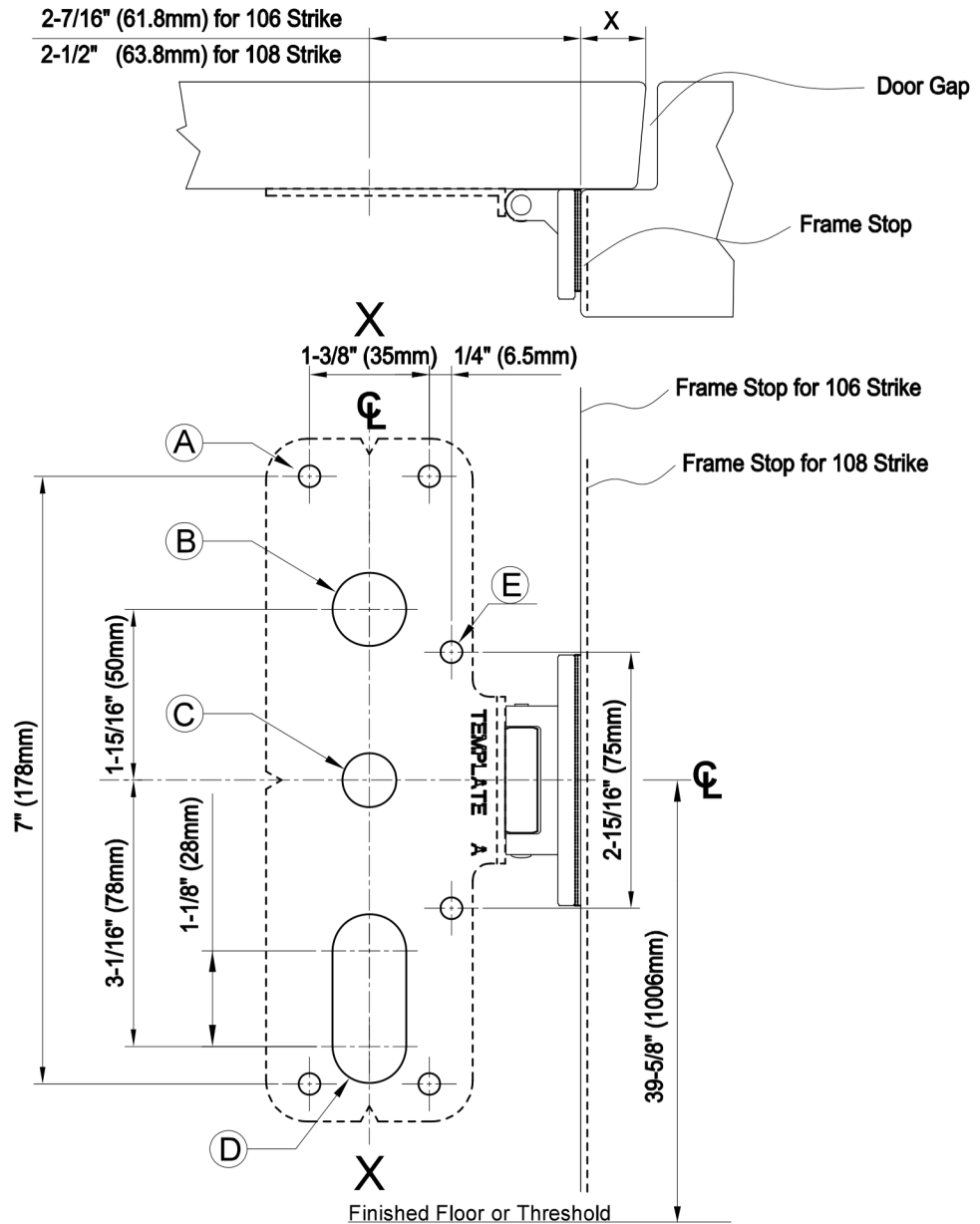


Templates

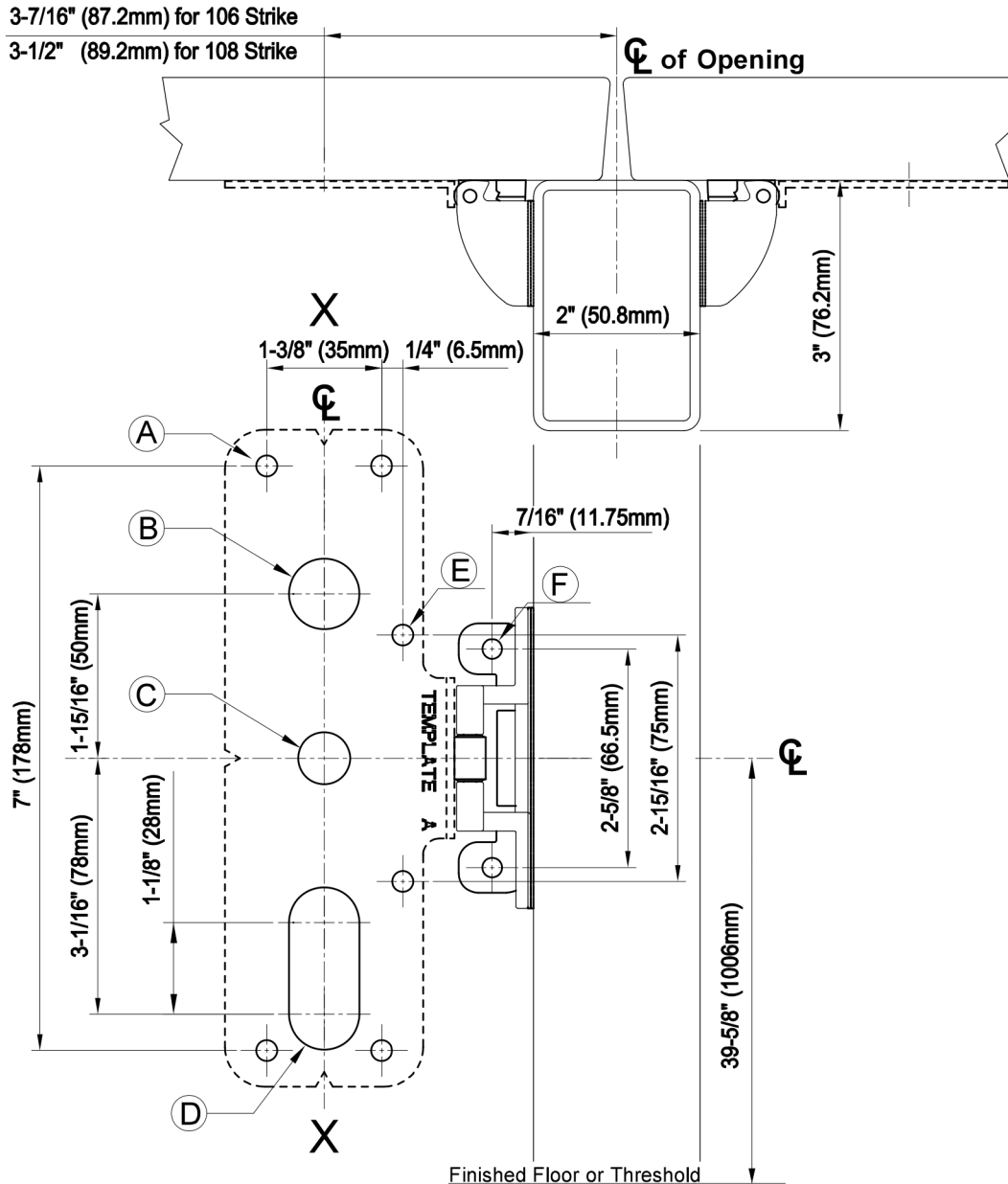
Preparation for RIM/3PT with 106/108/106Z Strike



NOTATION	ILL.	APPLICATIONS	DIMENSION	
			METAL	WOOD
A	○	EXIT ONLY	#25 DRILL #10-24 TAP	3 (1/8") DRILL PILOT 1" DEEP
		SEX BOLT OR TRIM	6 (1/4") DRILL (DEVICE SIDE) 10.3 (13/32") DRILL (TRIM SIDE)	
B	○	DOUBLE CYLINDER	22 (7/8") DRILL (CUT DEVICE SIDE)	
C	○	OUTSIDE CYLINDER	16 (5/8") DRILL (CUT DEVICE SIDE)	16 (5/8") DRILL (CUT THRU)
D	⊂	TRIM WITH WORKING LEVER	22 (7/8") DRILL (CUT DEVICE SIDE ONLY)	
E	○	SUPPORT BRACKET	#25 DRILL #10-24 TAP	3 (1/8") DRILL PILOT 1" DEEP

Templates

Preparation for RIM/3PT with 106/108 Strike & Mullion



NOTATION	ILL.	APPLICATIONS	DIMENSION	
			METAL	WOOD
A	○	EXIT ONLY	#25 DRILL #10-24 TAP	3 (1/8") DRILL PILOT 1" DEEP
		SEX BOLT OR TRIM	6 (1/4") DRILL (DEVICE SIDE) 10.3 (13/32") DRILL (TRIM SIDE)	
B	○	DOUBLE CYLINDER	22 (7/8") DRILL (CUT THRU)	
C	○	OUTSIDE CYLINDER	16 (5/8") DRILL (CUT DEVICE SIDE)	16 (5/8") DRILL (CUT THRU)
D	⊂	TRIM WITH WORKING LEVER	22 (7/8") DRILL (CUT DEVICE SIDE ONLY)	
E	○	SUPPORT BRACKET	#25 DRILL #10-24 TAP	3 (1/8") DRILL PILOT 1" DEEP
F	○	108 STRIKE	#25 DRILL #10-24 TAP	3 (1/8") DRILL PILOT 1" DEEP