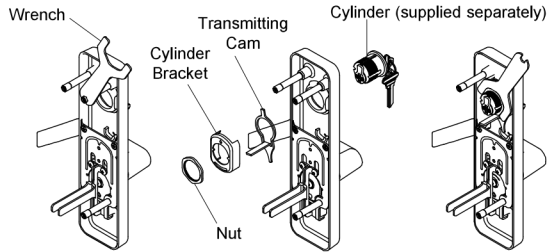


Lever Handle Series Installation Instructions

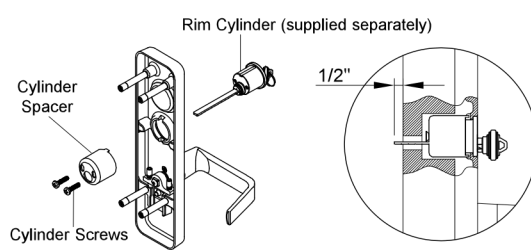
INSTALL CYLINDER

FOR MORTISE CYLINDER



1. Use the wrench provided to unscrew the thru-bolt.
2. Install cylinder, transmitting cam, cylinder bracket and nut.
3. Secure nut tightly by the wrench and re-install thru-bolt.

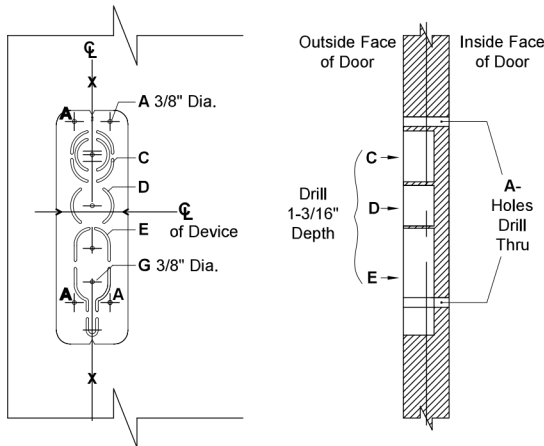
FOR RIM CYLINDER



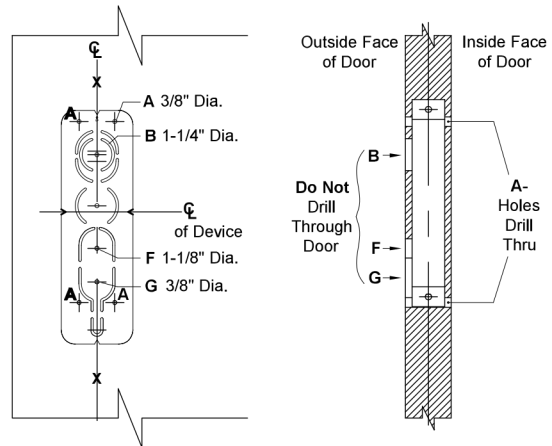
1. Mount rim cylinder to cylinder spacer and attach to outside trim with two(2) cylinder screws.
 2. Make sure the tailpiece is extending 1/2" from the inside face of door.
- NOTE:** Cut off tailpiece for different door ranges and various cylinder lengths.

DOOR PREPARATION FOR 300 SERIES TRIM

FOR RIM AND VERTICAL ROD DEVICE



FOR MORTISE LOCK



TEMPLATE APPLICATION CHART

DEVICE TYPE	RIM AND VERTICAL ROD				MORTISE LOCK			
CUT OUT ILLUSTRATION								
TRIM DESCRIPTION	302	308R	309R	314R	302	308M	309M	314M
FUNCTION	02	08	09	14	02	08	09	14
PREPARATION	A+G	A+C+E	A+D	A+E	A+G	A+B+F+G	A+B+G	A+F+G