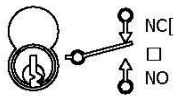
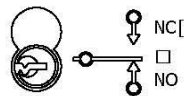


Key & Switch Positions

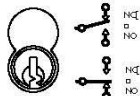


Key pos. 1 - Swt. pos. 1

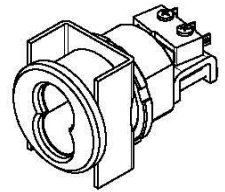


Key pos. 2 - Swt. pos. 2

Remove Key



Key pos. 1 only Swt.



CONTACT RATING

10A 125vac, 10A 250vac
Resistive

SWITCH TYPE

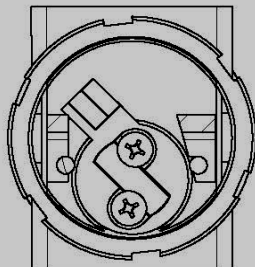
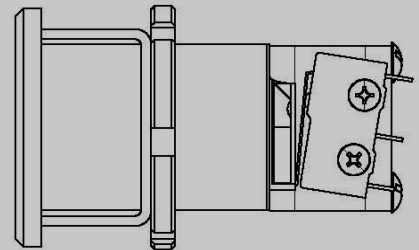
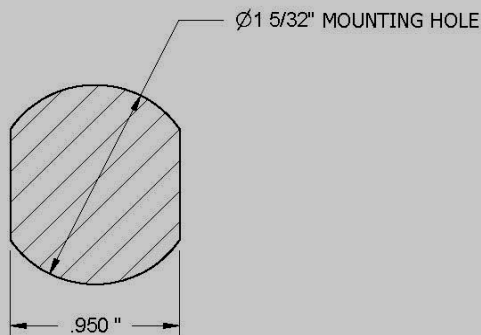
SPDT
(Single pole - Double Throw)

SWITCH ACTION

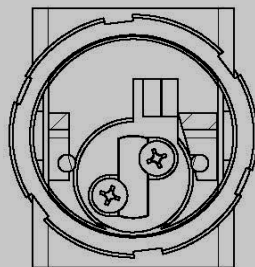
Momentary
on-on

KEY ROTATION

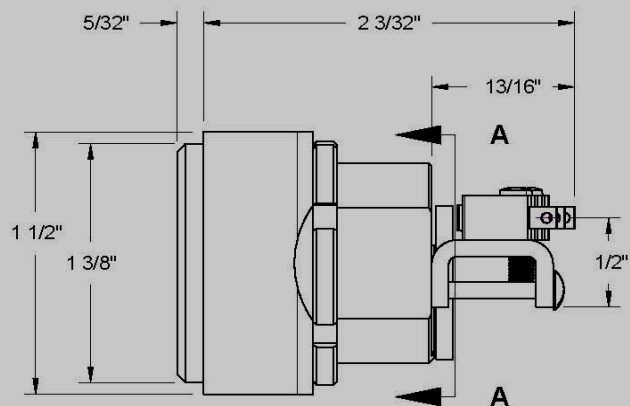
36°
Clockwise-on



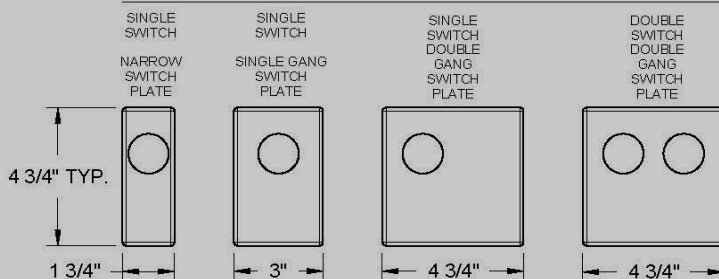
Section A-A
UNLOCKED 45°



Section A-A
LOCKED 0°



FACEPLATE Switch & Configuration

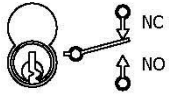


ES-1-A1 Installation Guide

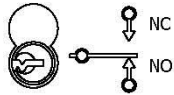


Oak Security Group, LLC
www.OakSecurity.com

Key & Switch Positions

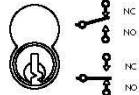


Key pos. 1 - Swt. pos. 1

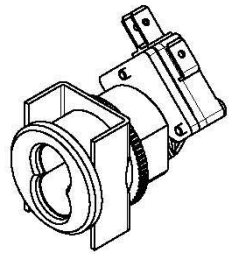


Key pos. 2 - Swt. pos. 2

Remove Key



Key pos. 1 only Swt.



CONTACT RATING

15A 125vac, 15A 250vac
Resistive

SWITCH TYPE

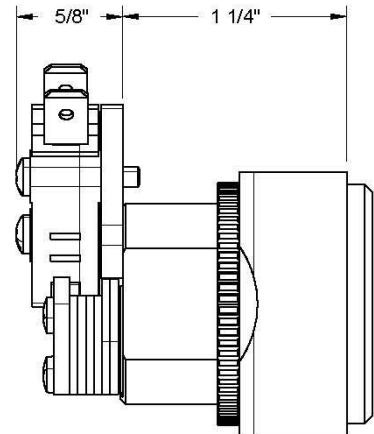
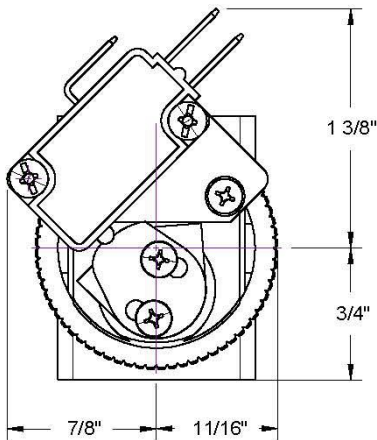
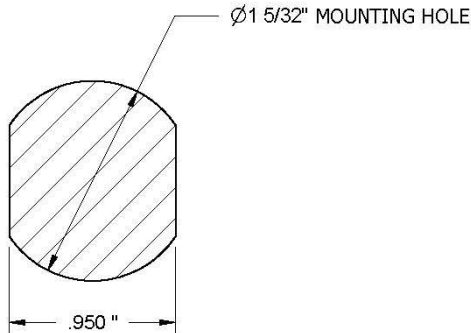
B1-SPDT
(Single pole - Double Throw)

SWITCH ACTION

Momentary
on-on

KEY ROTATION

45°
Clockwise-on



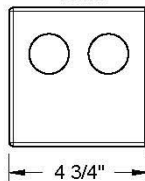
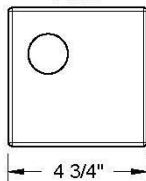
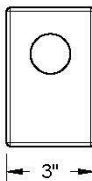
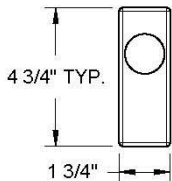
FACEPLATE Switch & Configuration

SINGLE
SWITCH
NARROW
SWITCH
PLATE

SINGLE
SWITCH
SINGLE GANG
SWITCH
PLATE

SINGLE
SWITCH
DOUBLE
GANG
SWITCH
PLATE

DOUBLE
SWITCH
DOUBLE
GANG
SWITCH
PLATE

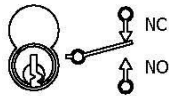


ES-1-B1 Installation Guide

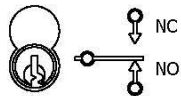


Oak Security Group, LLC
www.OakSecurity.com

Key & Switch Positions

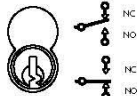


Key pos. 1 - Swt. pos. 1

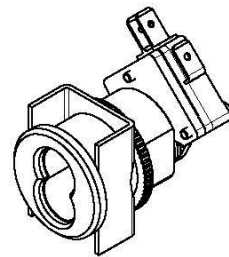


Key pos. 2 - Swt. pos. 2
(360° CCW)

Remove Key



Key pos. 1 and 2
Swt. pos. 1 and 2



CONTACT RATING

15A 125vac, 15A 250vac
Resistive

SWITCH TYPE

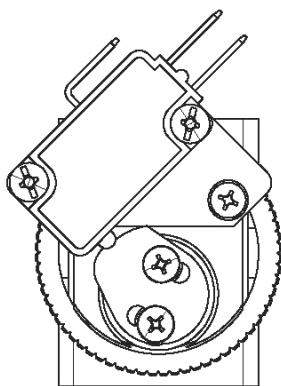
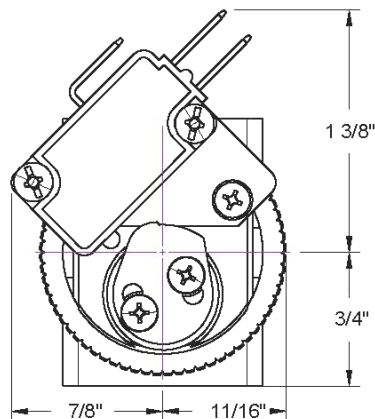
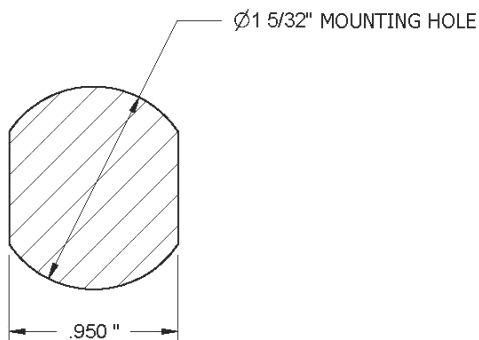
B2-SPDT
(Single pole - Double Throw)

SWITCH ACTION

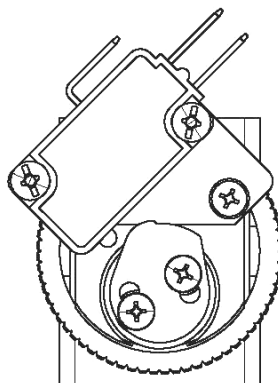
Maintained
on-on

KEY ROTATION

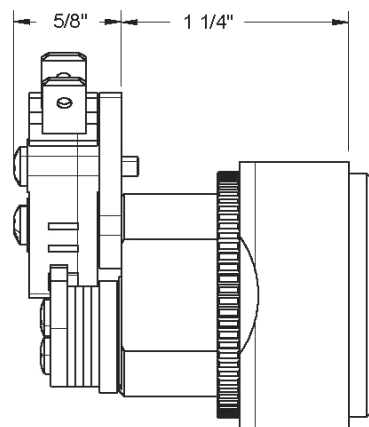
360°
Clockwise-on



UNLOCKED 360°

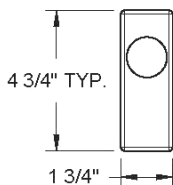


UNLOCKED 0°

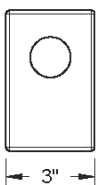


FACEPLATE Switch & Configuration

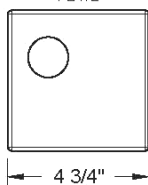
SINGLE
SWITCH
NARROW
SWITCH
PLATE



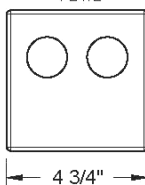
SINGLE
SWITCH
SINGLE GANG
SWITCH
PLATE



SINGLE
SWITCH
DOUBLE
GANG
SWITCH
PLATE



DOUBLE
SWITCH
DOUBLE
GANG
SWITCH
PLATE

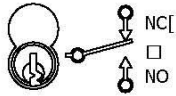


ES-1-B2 Installation Guide

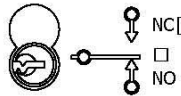


Oak Security Group, LLC
www.OakSecurity.com

Key & Switch Positions

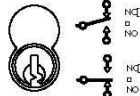


Key pos. 1 - Swt. pos. 1

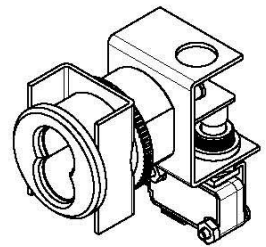


Key pos. 2 - Swt. pos. 2

Remove Key



Key pos. 1 only Swt.



CONTACT RATING

15A 125vac, 15A 250vac
Resistive

SWITCH TYPE

B3-SPDT
(Single pole - Double Throw)

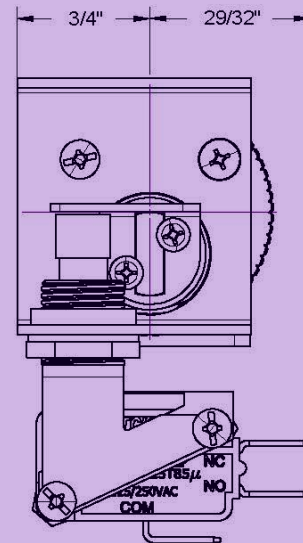
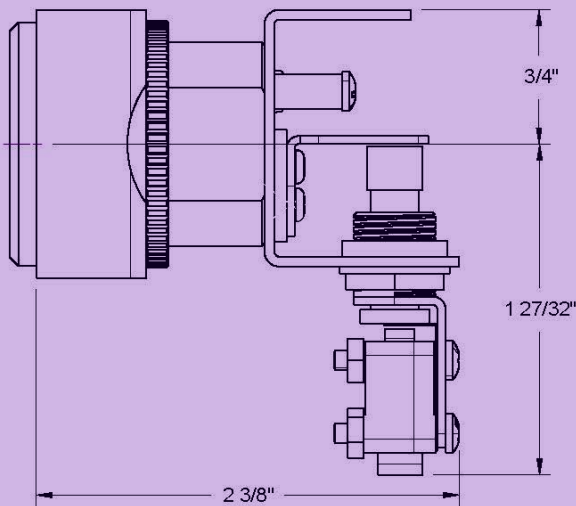
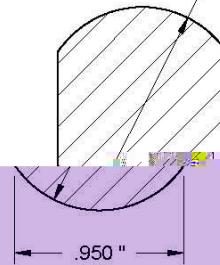
SWITCH ACTION

Momentary
on-on

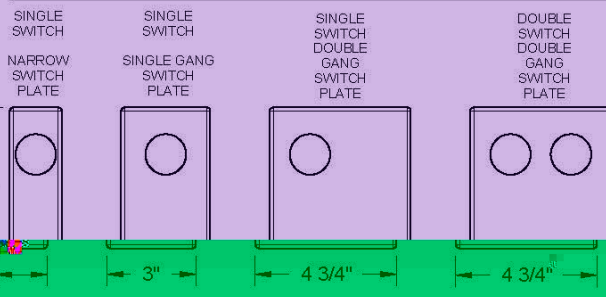
KEY ROTATION

30°
Clockwise-on

Ø1 5/32" MOUNTING HOLE



FACEPLATE Switch & Configuration

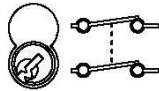
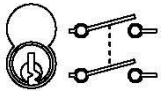


ES-1-B3 Installation Guide



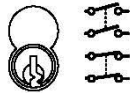
Oak Security Group, LLC
www.OakSecurity.com

Key & Switch Positions

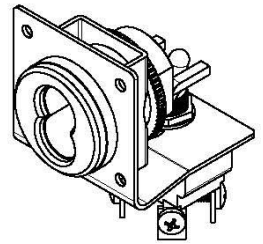


Key pos. 1 - Swt. pos. 1 Key pos. 2 - Swt. pos. 2

Remove Key



Key pos. 1 only
Swt. pos. 1 and 2



CONTACT RATING

15A 125vac, 15A 250vac, DC30v 15A
Resistive

SWITCH TYPE

DPST
(Double pole - Single Throw)

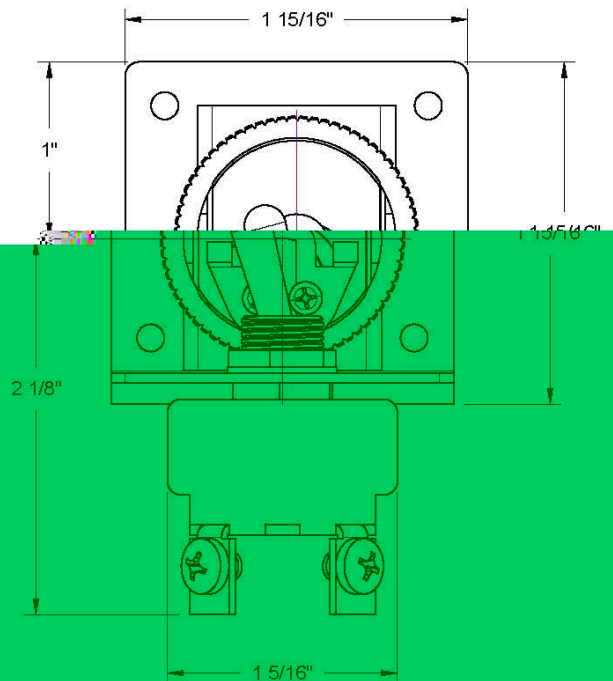
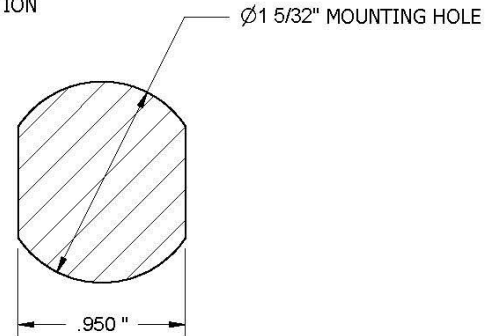
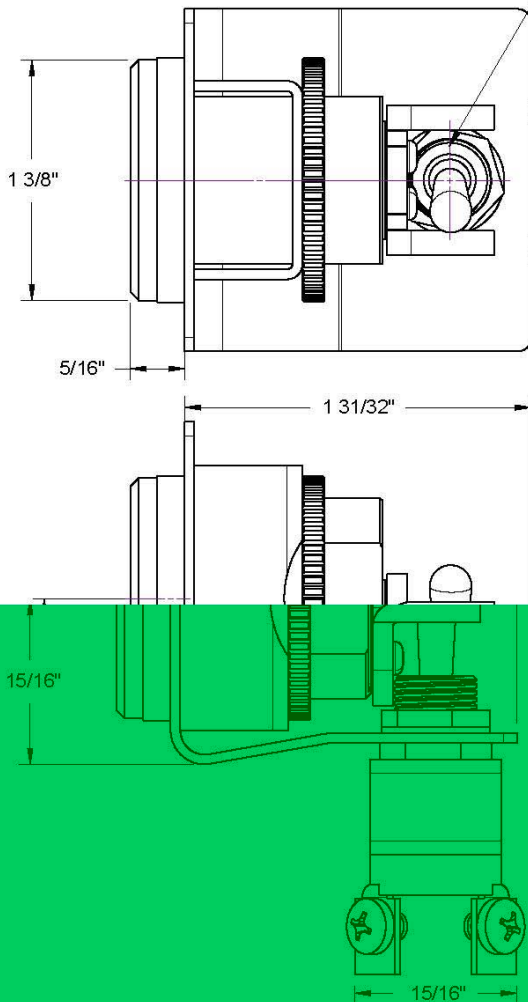
SWITCH ACTION

Maintained
on-off

KEY ROTATION

25° Clockwise-on
25° CounterClockwise-off

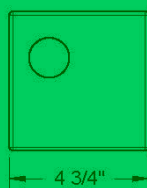
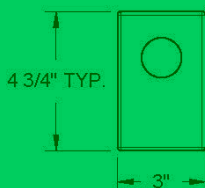
NOTE: SWITCH IN REAR LOCATION



FACEPLATE Switch & Configuration

SINGLE
SWITCH
SINGLE GANG
SWITCH
PLATE

SINGLE
SWITCH
DOUBLE
GANG
SWITCH
PLATE

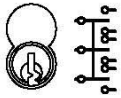


ES-1-D2 Installation Guide

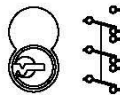


Oak Security Group, LLC
www.OakSecurity.com

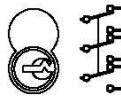
Key & Switch Positions



Key pos. 1
Swt. pos. 1



Key pos. 2
Swt. pos. 2

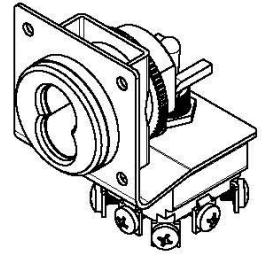


Key pos. 3
Swt. pos. 3

Remove Key



Key pos. 1 only
Swt. pos. 1, 2, and 3



CONTACT RATING

25A 125vac, 8A 250vac, 20A 30vdc
Resistive

SWITCH TYPE

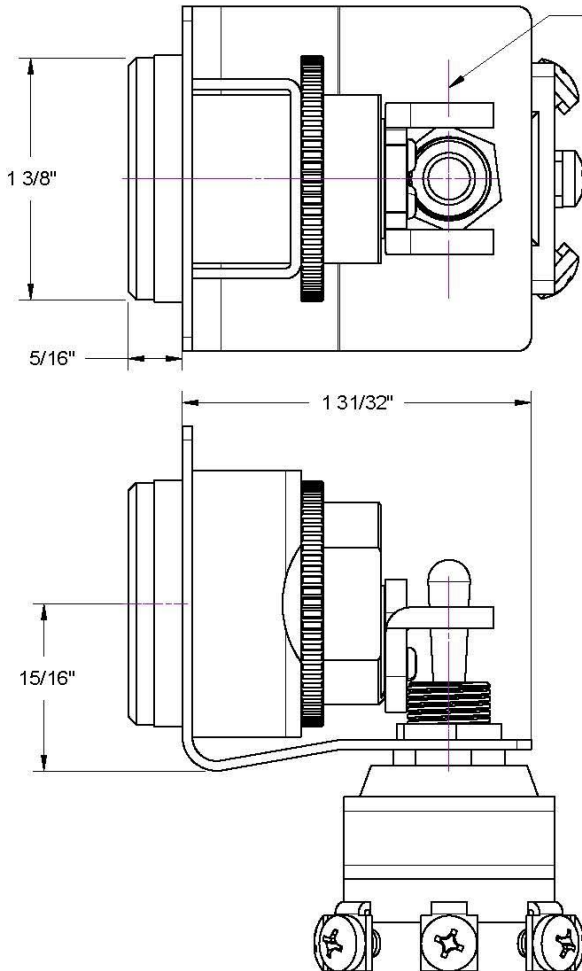
TPDT
(Triple pole - Double Throw)

SWITCH ACTION

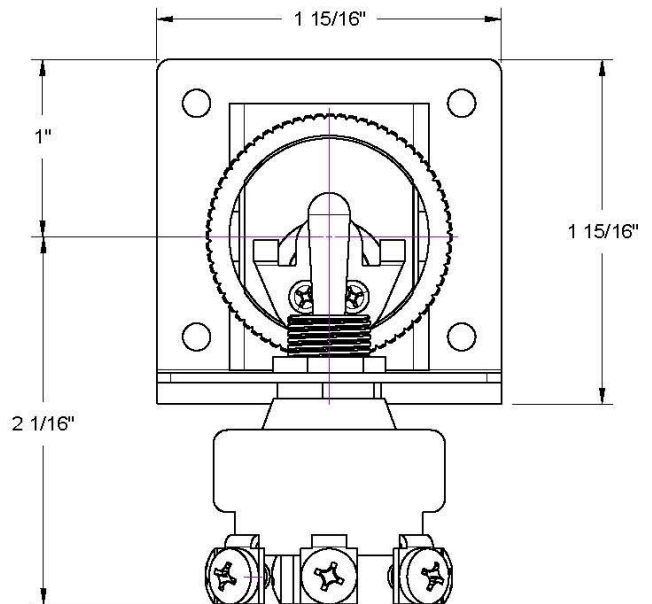
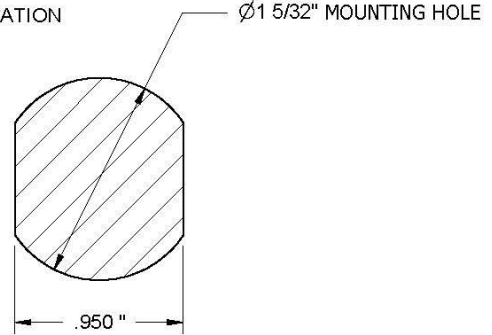
Maintained
on-center off-center

KEY ROTATION

30° Clockwise-on
30° Counter Clockwise-off



NOTE: SWITCH IN REAR LOCATION

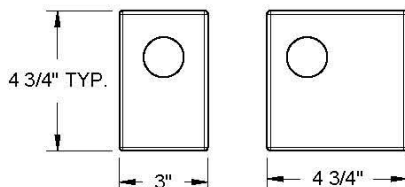


FACEPLATE Switch & Configuration

SINGLE
SWITCH

SINGLE GANG
SWITCH
PLATE

SINGLE
SWITCH
DOUBLE
GANG
SWITCH
PLATE



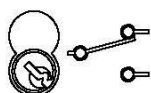
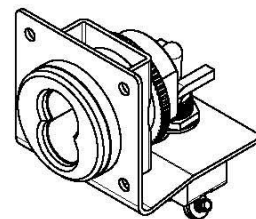
ES-1-E2 Installation Guide



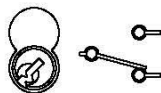
Oak Security Group, LLC
www.OakSecurity.com

Key & Switch Positions

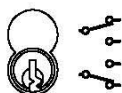
Remove Key



Key pos. 1
Swt. pos. 1



Key pos. 2
Swt. pos. 2



Key pos. 3 only
Swt. pos. 1 and 2

CONTACT RATING

SWITCH TYPE

SWITCH ACTION

KEY ROTATION

125VAC, 5A 250VAC,
20A 30Vdc Resistive

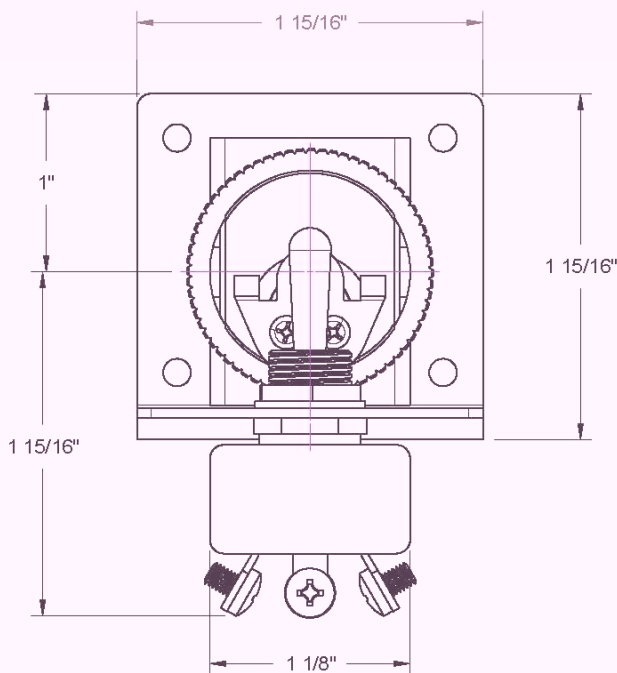
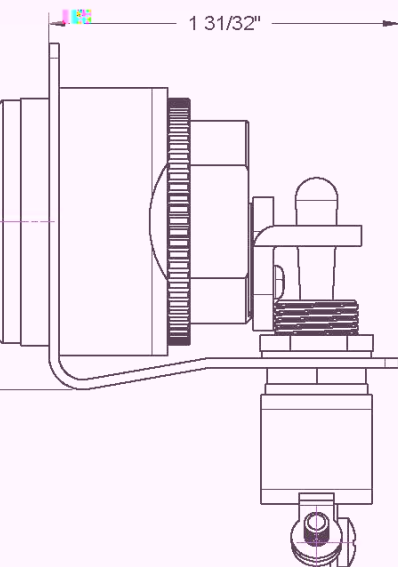
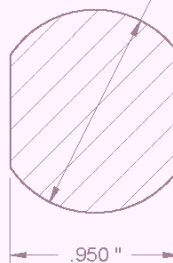
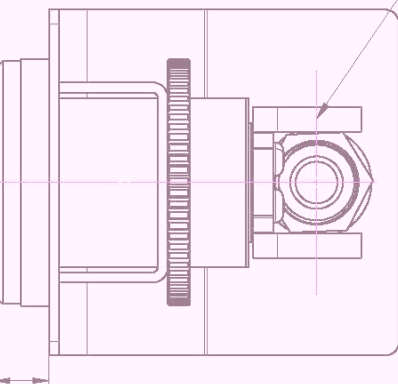
SPDT
(Single pole - Double Throw)

Maintained
on-on

32° Clockwise-on
32° Counter Clockwise-off

NOTE: SWITCH IN REAR LOCATION

Ø1 5/32" MOUNTING HOLE



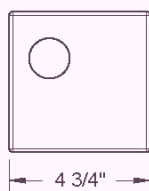
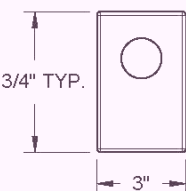
FACEPLATE

Switch & Configuration

SINGLE
SWITCH

SINGLE GANG
SWITCH
PLATE

SINGLE
SWITCH
DOUBLE
GANG
SWITCH
PLATE



PTN NO.
ES-1-L2

LE

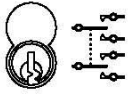
INST

ES-1-L2 Installation Guide

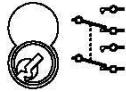


Oak Security Group, LLC
www.OakSecurity.com

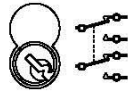
Key & Switch Positions



Key pos. 1
Swt. pos. 1



Key pos. 2
Swt. pos. 2

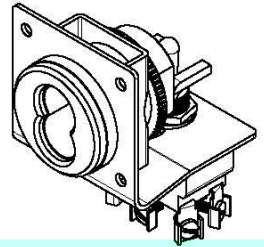


Key pos. 3
Swt. pos. 3



Key pos. 1 only
Swt. pos. 1, 2, and 3

Remove Key



CONTACT RATING

15A 125vac, 15A 250vac, Resistive,
Motor Load 400w 125vac

SWITCH TYPE

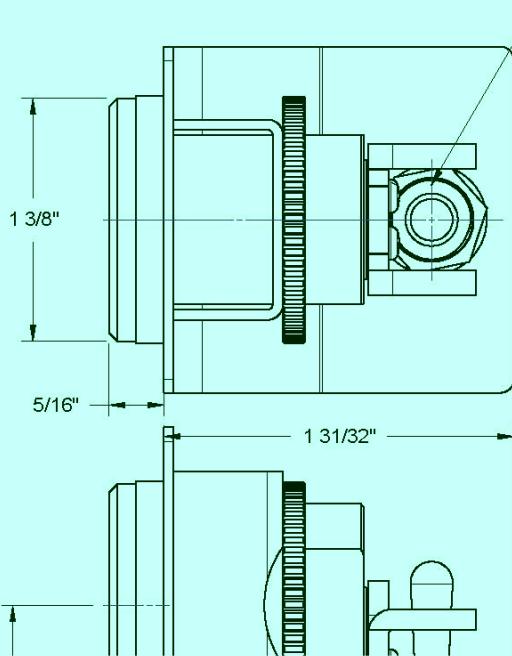
DPDT
(Double pole - Double Throw)

SWITCH ACTION

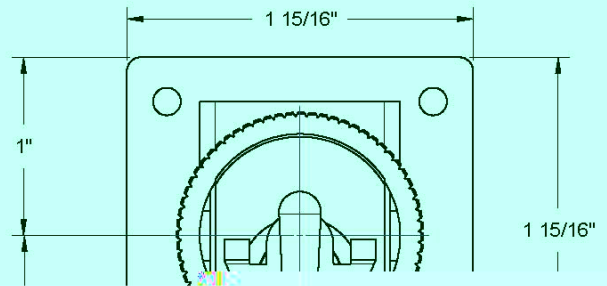
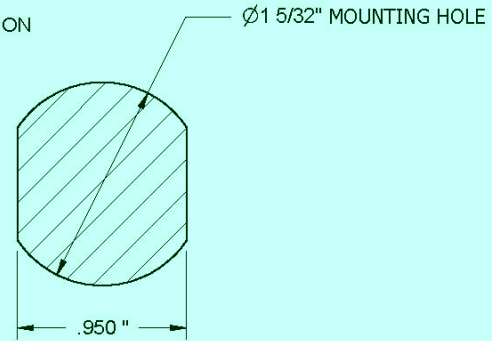
Momentary
on-center off-center

KEY ROTATION

24° Clockwise-on
24° Counter Clockwise-off



NOTE: SWITCH IN REAR LOCATION

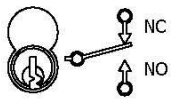


ES-1-K4 Installation Guide

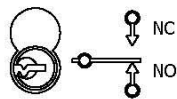


Oak Security Group, LLC
www.OakSecurity.com

Key & Switch Positions

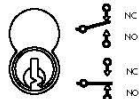


Key pos. 1 - Swt. pos. 1

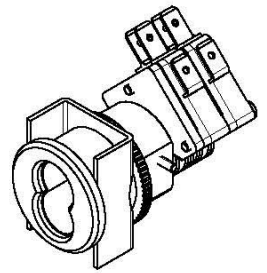


Key pos. 2 - Swt. pos. 2

Remove Key



Key pos. 1 only Swt.



CONTACT RATING

15A 125vac, 15A 250vac
Resistive

SWITCH TYPE

B1-SPDT
(Single pole - Double Throw)

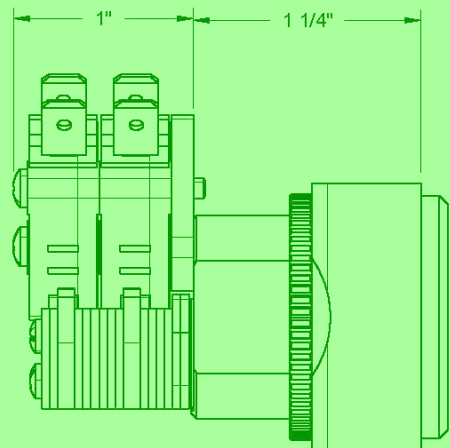
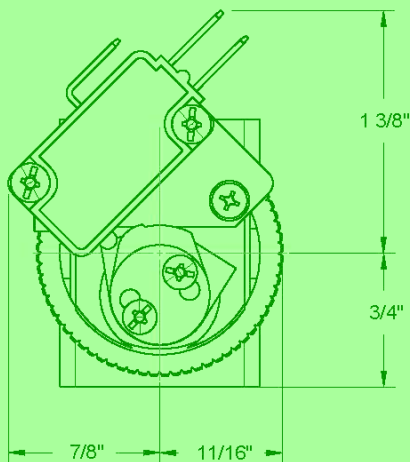
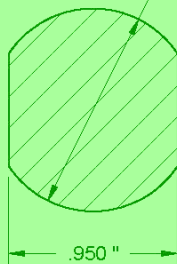
SWITCH ACTION

Momentary
on-on

KEY ROTATION

45°
Clockwise-on

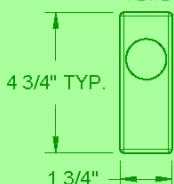
3/32" MOUNTING HOLE



FACEPLATE Switch & Configuration

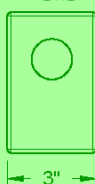
SINGLE
SWITCH

NARROW
SWITCH
PLATE

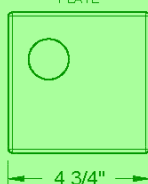


SINGLE
SWITCH

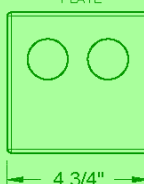
SINGLE GANG
SWITCH
PLATE



SINGLE
SWITCH
DOUBLE
GANG
SWITCH
PLATE



DOUBLE
SWITCH
DOUBLE
GANG
SWITCH
PLATE



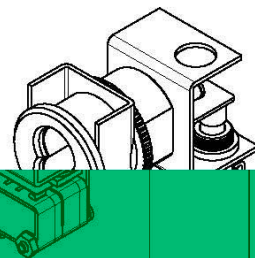
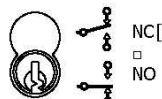
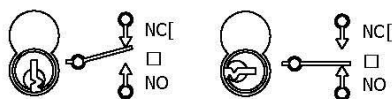
ES-1-J1 Installation Guide



Oak Security Group, LLC
www.OakSecurity.com

Key & Switch Positions

Remove Key



CONTACT RATING

125vac, 15A 250vac,
Resistive

SWITCH TYPE

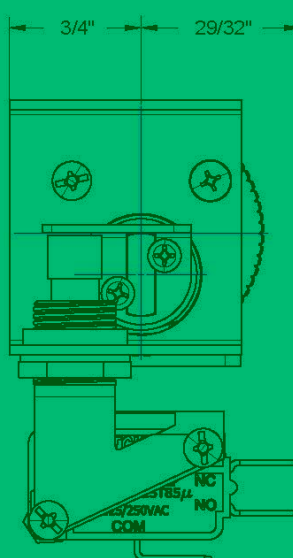
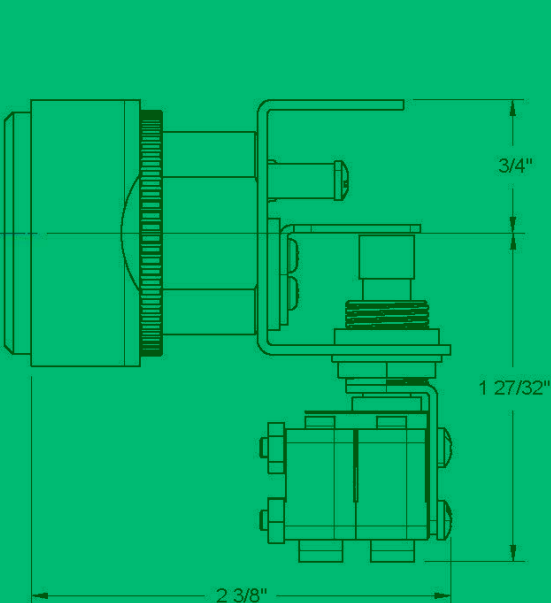
B3-SPDT
(Single pole - Double Throw)

SWITCH ACTION

Momentary
on-on

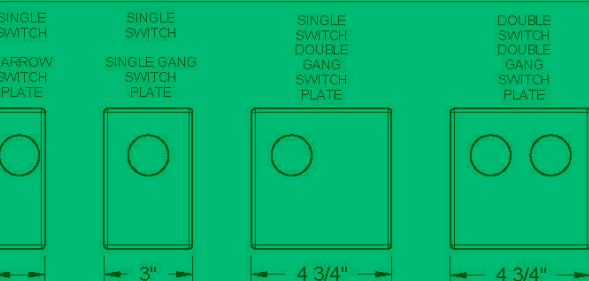
KEY ROTATION

30°
Clockwise-on



FACEPLATE

Switch & Configuration



PTN NO.
ETIDATA2

INST

ES-1-J3 Installation Guide



Oak Security Group, LLC
www.OakSecurity.com

Key & Switch Positions

Remove Key



Key pos. 1
Swt. pos. 1



Key pos. 2
Swt. pos. 2



Key pos. 3
Swt. pos. 3



Key pos. 1 only
Swt. pos. 1, 2, and 3

CONTACT RATING

15A 125vac, 15A 250vac
Resistive

SWITCH TYPE

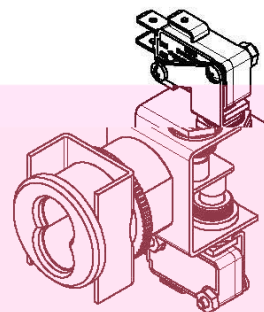
P2-(4) SPDT
(Single pole - Double Throw)

SWITCH ACTION

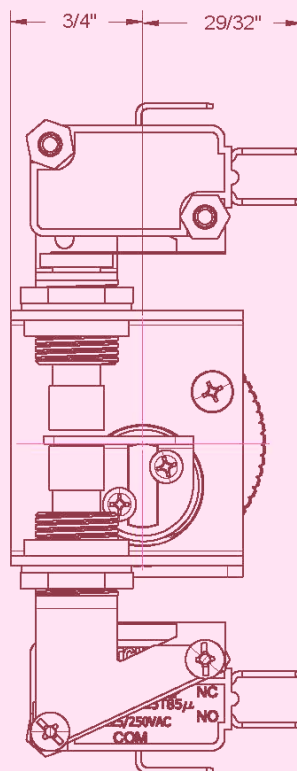
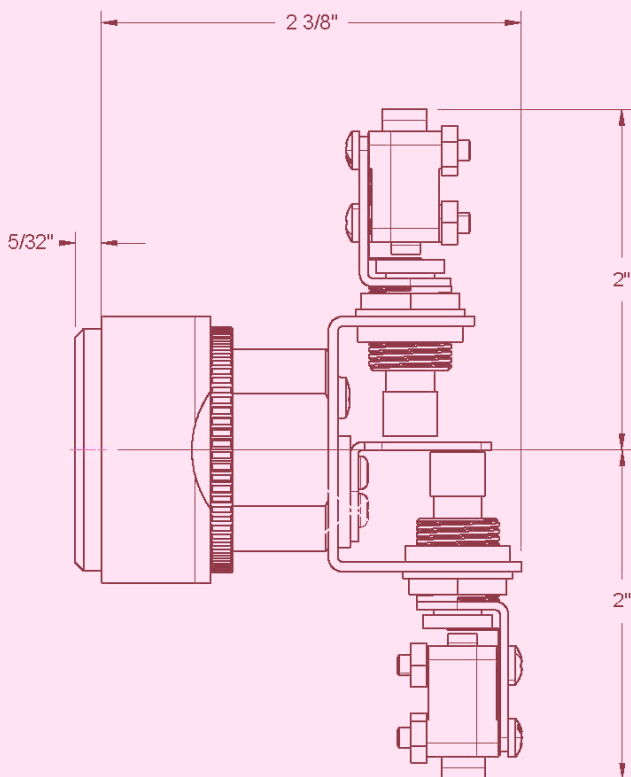
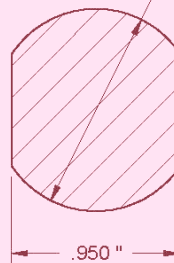
Momentary
on-on

KEY ROTATION

30° Clockwise-on
30° Counter Clockwise-off



Ø1 5/32" MOUNTING HOLE



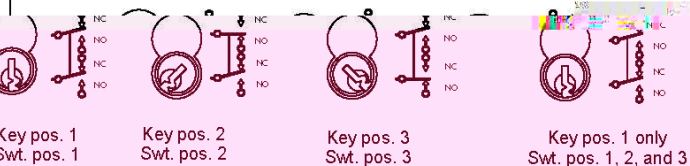
ES-1-P2 Installation Guide



Oak Security Group, LLC
www.OakSecurity.com

Key & Switch Positions

Remove Key



CONTACT RATING

15A 125vac, 15A 250vac
Resistive

SWITCH TYPE

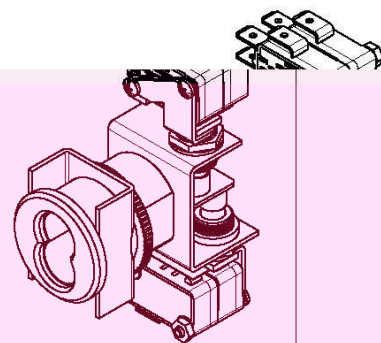
P2-(4) SPDT
(Single pole - Double Throw)

SWITCH ACTION

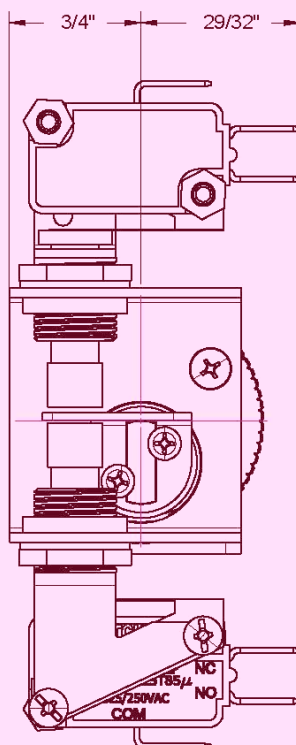
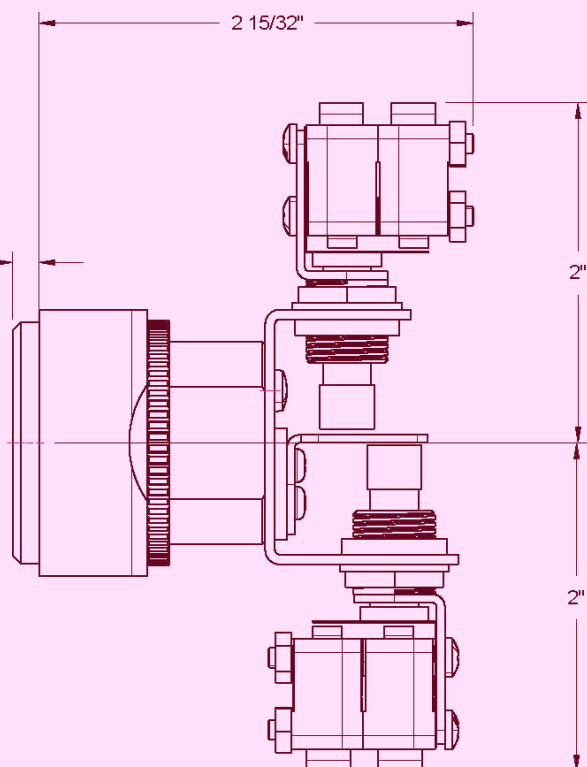
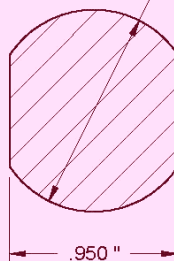
Momentary
on-on

KEY ROTATION

30° Clockwise-on
30° Counter Clockwise-off



Ø1 5/32" MOUNTING HOLE



ES-1-R4 Installation Guide

PTN NO.
ETIDATA1



Oak Security Group, LLC
www.OakSecurity.com