


  
**OAK**<sup>TM</sup>  
SECURITY GROUP  
**P SERIES PADLOCKS**





**OAK™ Security Group** represents strength and stability in providing extensive experience, expertise and appropriate solutions that provide enhanced protection for your facilities. With all of these solutions comes our unparalleled, direct support.

***Our unique philosophy is selling direct to you.***

The OAK™ team brings a wealth of experience in listening, building relationships and applying appropriate solutions as well as extensive product development and manufacturing experience. These long-term relationships help us understand your needs, and our extensive experience equip us to recommend the most effective products and services. We work directly with our customer to design, implement and support a comprehensive facility solution. Our customized design is based on a foundation of high quality OAK™ locks, industry leading solutions and custom keying systems.

We can customize new systems or seamlessly integrate our solutions into your existing systems, so you need not disrupt what you've carefully built. The results are a "best in class" solution, with a wider range of proven products, all backed by superior service and support.





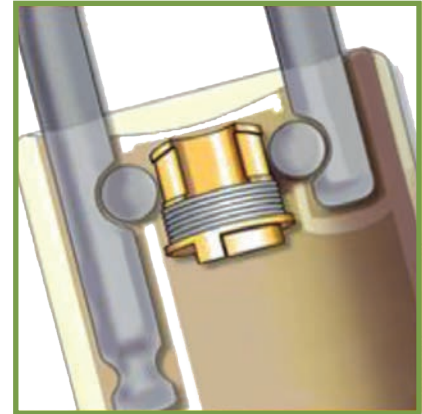
## **P Series Padlocks**

### **TABLE OF CONTENTS**

Features	4
Function change to key retained	4
11P series	5
21P series	6
21LP series	7
41P series	8
41SP series	9
HPL concealed shackle	9
Exploded view	10
Clevis/Chain options	10
Systems approach	11

## OAK™ P Series Padlocks

Oak Security Group padlocks provide a combination of finely crafted beauty, and rugged durability. Precisely manufactured to the quality our customers have come to expect from all OAK™ products, OAK™ has combined proven design features such as dual ball bearing locking with handsomely rugged cases to provide both beauty and brawn. Whether your application requires minimal security or the most stringent security protection, OAK™ can meet your padlock needs. And all OAK™ padlocks accept the OAK™ Interchangeable core to allow padlocks to be keyed into existing masterkey systems.



**Dual ball bearing locking**  
*Provides maximum strength  
and shim resistance*

## Features

- Solid brass precision machined case available in brass (**606**) or satin chrome (**626**) finish. Also available with solid stainless steel case (**630**).
- Stainless steel ball bearing tumblers lock both heel and toe sides of shackle for maximum strength.
- Hardened molybdenum alloy steel shackle (H) (standard) provides strength, durability, and maximum cut resistance. Hardened shackle is chrome plated for corrosion protection.
- Optional brass (**B**) and stainless steel (**S**) shackles available.
- Multiple shackle opening choices available.
- Available in non-key-retained (standard) and key-retained functions.
- Optional solid stainless steel case combined with the optional stainless shackle provide industry leading corrosion protection for the most demanding environments.
- All OAK™ padlocks accept the OAK™ IC core, as well as other SFIC cores.
- Uniquely tailored masterkey systems backed by extensive industry experienced system design and support.

## OAK™ Function change to key retained

OAK™ Padlocks are offered in both key-retained and non-key-retained functions. The non-key-retained function is offered as the standard function, and allows the user to remove their key from an unlocked padlock. The key-retained function is offered for situations that require the key to remain with the unlocked padlock until padlock is locked. The padlock function is easily changed from non-key-retained to key-retained by simply adding a set screw to the locking cam.



*Insert function change set  
screw here to change function  
to "key-retained".*

**P series padlock  
locking cam**

## OAK™ 11P Padlock Series

### Specifications

**Shackle Dimensions:** “D” = 1/4", “Y” = 25/32", “X” = 3/4", 1 1/2", 2", 4"

**Shackle Material:** Hardened molybdenum (standard), brass or stainless steel (optional).

**Case Dimensions:** “W” = 1 17/32", “H” = 1 3/16", “T” = 25/32"

**Case Material:** Precision machined from extruded brass (standard), or machined stainless steel (optional).

**Function:** Non-key-retained (standard), optional key-retained field changeable.

**Finishes:** **606** (satin brass), **626** (satin chrome), and **630** (satin stainless steel)

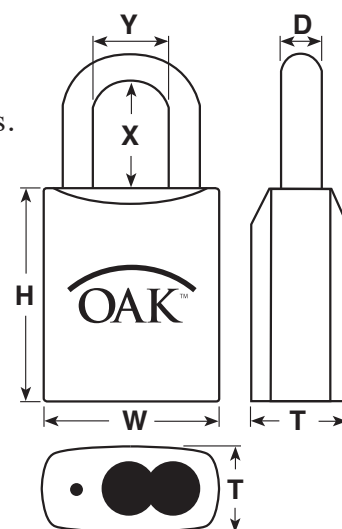
**Clevis & Chain:** Case mounted brass clevis optional. Brass or steel chains available.

**IC Core:** Compatible with OAK™ IC core, and all other SFIC cores.

**Masterkeying:** Tailored masterkey system set-up and design.



11P series



4" shackle



2" shackle



1 1/2" shackle



3/4" shackle

### How To Order - 11P Series Padlock

11P	1H		N	626	CS
Series	Shackle		Function	Case Finish	Options
11P – 1/4" dia.	Height	Material	R – key retained N – non-keyed (std)	606 – brass 626 – chrome 630 – stainless	CS – clevis/chain - steel 9" CB – clevis/chain - brass 9"
	0 – 3/4"	H – hardened			
	1 – 1 1/2"	molybdenum (std)			
	2 – 2"	B – brass (opt)			
	4 – 4"	S – stainless (opt)			



## OAK™ 21P Padlock Series

### Specifications

**Shackle Dimensions:** “D” =  $\frac{5}{16}$ ", “Y” =  $\frac{25}{32}$ ", “X” =  $\frac{3}{4}$ ", 1  $\frac{1}{2}$ ", 2", 4" or 18" (cable).

**Shackle Material:** Hardened molybdenum alloy steel (standard), Optional brass, or stainless steel, and cable ( $\frac{3}{16}$ " diameter braided steel, protective coated).

**Case Dimensions:** “W” = 1  $\frac{3}{4}$ ", “H” = 1  $\frac{3}{16}$ ", “T” =  $\frac{7}{8}$ "

**Case Material:** Precision machined from extruded brass (standard), or machined stainless steel (optional).

**Function:** Non-key-retained (standard), optional key-retained field changeable.

**Finishes:** **606** (satin brass), **626** (satin chrome), and **630** (satin stainless steel)

**Clevis & Chain:** Case mounted brass clevis optional. Brass or steel chains available.

**IC Core:** Compatible with OAK™ IC core, and all other SFIC cores.

**Masterkeying:** Tailored masterkey system set-up and design.



21P series

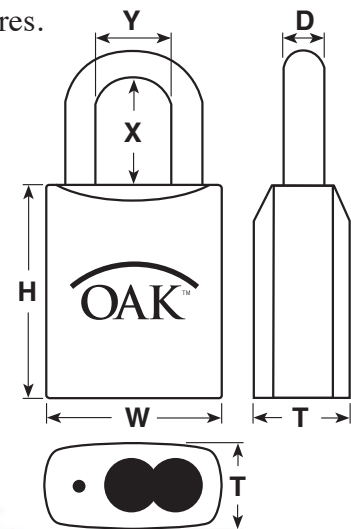


4" shackle

2" shackle

1  $\frac{1}{2}$ " shackle

$\frac{3}{4}$ " shackle



### How To Order - 21P Series Padlock

21P	1H		N	626	CS
Series	Shackle		Function	Case Finish	Options
21P – $\frac{5}{16}$ " dia.	<b>Height</b>	<b>Material</b>	<b>R</b> – key retained <b>N</b> – non-keyed (std)	<b>606</b> – brass <b>626</b> – chrome <b>630</b> – stainless	<b>CS</b> – clevis/chain - steel 9" <b>CB</b> – clevis/chain - brass 9"
	0 – $\frac{3}{4}$ "	<b>H</b> – hardened			
	1 – 1 $\frac{1}{2}$ "	molybdenum (std)			
	2 – 2"	<b>B</b> – brass (opt)			
	4 – 4"	<b>S</b> – stainless (opt)			
	18 – 18"	<b>C</b> – 18" cable (opt)			

## OAK™ 21LP Padlock Series

### Specifications

**Shackle Dimensions:** “D” =  $\frac{5}{16}$ ", “Y” =  $\frac{25}{32}$ ", “X” =  $\frac{3}{4}$ ", 1  $\frac{1}{2}$ ", 2", 4".

**Shackle Material:** Hardened molybdenum alloy steel (standard).

**Case Dimensions:** “W” = 1  $\frac{49}{64}$ ", “H” = 1  $\frac{13}{16}$ ", “T” =  $\frac{3}{4}$ "

**Case Material:** Precision machined from extruded aluminum (std).

**Function:** Non-key-retained (standard).

**Finishes:** 673 (aluminum) Anodized colors: Blue, Red, Green, Black, Yellow, Orange.

**IC Core:** Compatible with OAK™ IC core, and all other SFIC cores.

**Masterkeying:** Tailored masterkey system set-up and design.

**Hasp:** Optional 6-position lockout/tagout hasp (PLH) available.



21LP series

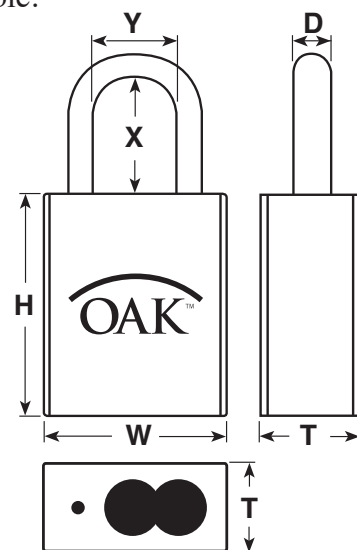


PLH

Lockout/tagout hasp



Hasp w/padlocks



21LP – padlock color options

### How To Order - 21LP Series Padlock

21LP	1H		N	673	Red
Series	Shackle		Function	Case Finish	Options
21LP – 5/16" dia. lockout	Height	Material	N – non-keyed	673 – aluminum	Red – anodized red
	0 – 3/4" 1 – 1 1/2" 2 – 2" 4 – 4"	H – hardened molybdenum			Blue – anodized blue Green – anodized green Black – anodized black Yellow – anodized yellow Orange – anodized orange PLH – lockout/tagout hasp

## OAK™ 41P Padlock Series

### Specifications

**Shackle Dimensions:** “D” =  $\frac{3}{8}$ ", “Y” =  $\frac{25}{32}$ ", “X” =  $\frac{3}{4}$ ", 1  $\frac{1}{2}$ ", 2", 4".

**Shackle Material:** Hardened molybdenum (standard), brass or stainless steel (optional).

**Case Dimensions:** “W” = 2", “H” = 1  $\frac{3}{16}$ ", “T” = 1"

**Case Material:** Precision machined from extruded brass (standard), machined stainless steel (optional).

**Function:** Non-key-retained (standard), optional key-retained field changeable.

**Finishes:** **606** (satin brass), **626** (satin chrome), and **630** (satin stainless steel)

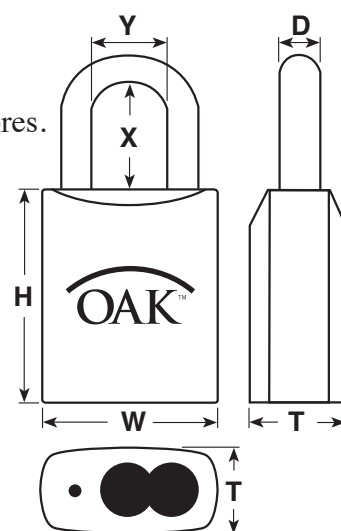
**Clevis & Chain:** Case mounted brass clevis optional. Brass or steel chains available.

**IC Core:** Compatible with OAK™ IC core, and all other SFIC cores.

**Masterkeying:** Tailored masterkey system set-up and design.



41P series



4" shackle



2" shackle



1  $\frac{1}{2}$ " shackle



$\frac{3}{4}$ " shackle

### How To Order - 41P Series Padlock

41P	1H		N	626	CS
Series	Shackle		Function	Case Finish	Options
41P – $\frac{3}{8}$ " dia.	Height	Material	R – key retained N – non-keyed (std)	606 – brass 626 – chrome 630 – stainless	CS – clevis/chain - steel 9" CB – clevis/chain - brass 9" WC – weather cover
	0 – $\frac{3}{4}$ "	H – hardened			
	1 – 1 $\frac{1}{2}$ "	molybdenum (std)			
	2 – 2"	B – brass (opt)			
	4 – 4"	S – stainless (opt)			



## OAK™ 41SP Padlock Series

### Specifications

**Shackle Dimensions:** “D” =  $\frac{3}{8}$ ”, “Y” =  $\frac{25}{32}$ ”, “X” = 1”

**Shackle Material:** Stainless steel (standard).

**Case Dimensions:** “W” = 2”, “H” =  $3\frac{5}{64}$ ”, “T” = 1”

**Case Material:** Precision machined from stainless steel (standard).

**Function:** Non-key-retained (standard), optional key-retained field changeable.

**Finishes:** **630** (satin stainless steel)

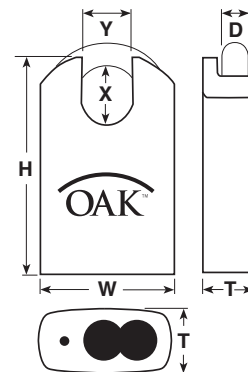
**Clevis & Chain:** Case mounted brass clevis optional.  
Brass or steel chains available.

**IC Core:** Compatible with OAK™ IC core,  
and all other SFIC cores.

**Masterkeying:** Tailored masterkey system set-up and design.



**41SP series**



### How To Order - 41SP Series Padlock

41SP	OS		N	630	CS
Series	Shackle		Function	Case Finish	Options
41SP – $\frac{3}{8}$ " dia. shrouded	Height	Material	R – key retained	630 – stainless	CS – clevis/chain - steel 9"
	0 – 1"	S – stainless	N – non-keyed (std)		CB – clevis/chain - brass 9"

## OAK™ HPL Concealed Shackle Lock

### Specifications

**Shackle Dimensions:** “D” =  $\frac{3}{8}$ " (concealed).

**Shackle Material:** Hardened molybdenum alloy steel.

**Case Dimensions:** “W” =  $2\frac{7}{8}$ ”, “H” =  $\frac{57}{64}$ ”, “T” =  $1\frac{1}{2}$ " (stepped back only)

**Hasp cutout:** “Y” =  $1\frac{23}{32}$ ”, “X” =  $\frac{19}{32}$ "

**Case Material:** Precision machined from hardened steel.

**Function:** Non-key-retained (standard).

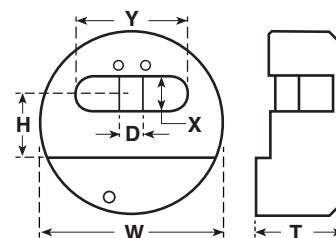
**Finishes:** Black E-coated

**IC Core:** Compatible with OAK™ IC core,  
and all other SFIC cores.

**Masterkeying:** Tailored masterkey system set-up and design.



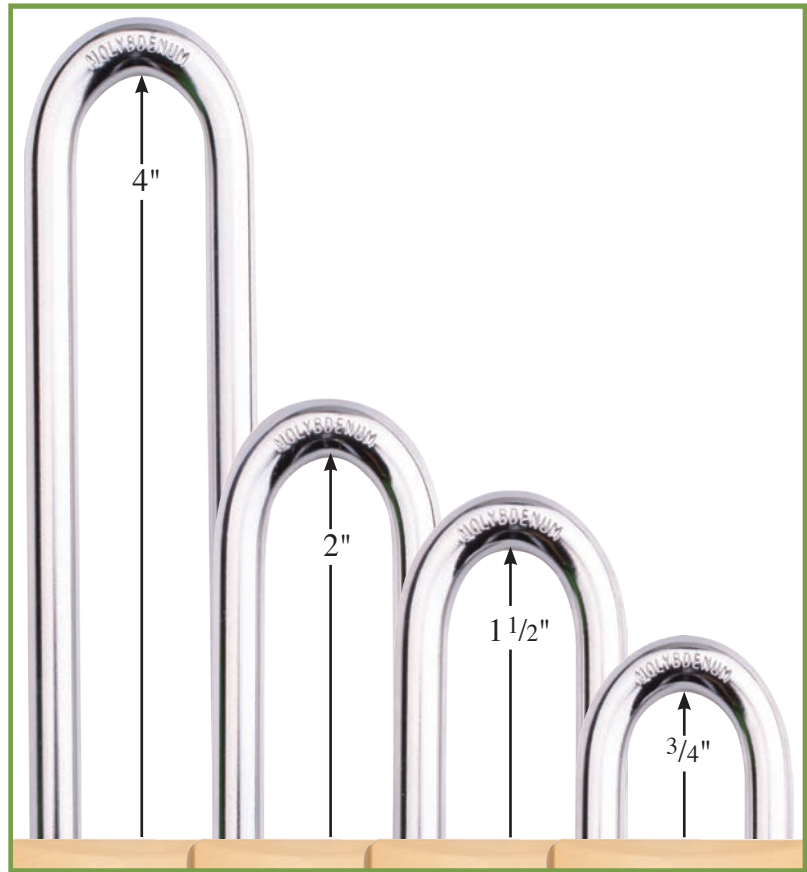
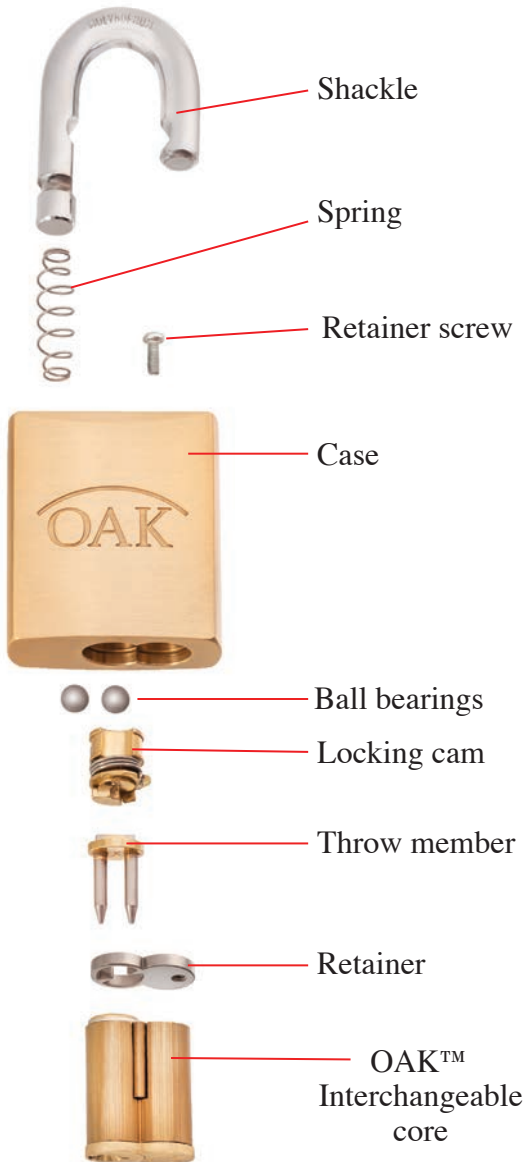
**HPL  
Concealed shackle lock**



### How To Order - HPL Concealed Shackle Lock

HPL	Black		Flat
Series	Shackle		Options
HPL – concealed	Height	Material	Black E-Coated
	Concealed	H – molybdenum	
			Flat – flat back for use with security style hasp (standard) Step – stepped back for use with strap style hasp (extended delivery)

## OAK™ Exploded View



**Shackle sizing chart**

OAK™ padlock shackles are available in hardened molybdenum alloy steel, brass or stainless steel materials, as well as  $\frac{3}{4}$ ", 1  $\frac{1}{2}$ ", 2" and 4" heights. This chart may be used to determine the appropriate shackle height for your need.

## Clevis/Chain Options

If your application requires the padlock to be tethered to an installation to prevent the padlock from being misplaced, a clevis and chain may be the solution required. OAK™ padlocks are available with 9" brass or steel chain attached with a brass body-mounted clevis.



**Steel chain option**



**Brass chain option**



## A Systems Approach To Security

OAK™ Security will develop a comprehensive facility masterkey system bringing a solution to any current keying problems. We will also provide flexibility for any future keying needs.

You may have already made a significant investment into an existing small format interchangeable core system. We can seamlessly integrate our additions into your system and work with you on any necessary expansions to the system.

When a higher level of security is required, OAK™ offers a full range of industry leading patented keying options. Our patent protected keying systems ensure that only OAK™ or your designated staff can make and issue patent protected keys. OAK™ is proud to partner with \*Medeco® and \*Schlage® in providing these patented systems.



## Government

**NAICS:**  
332510; 423710; 334290

**Cage Code:**  
43GB3

**Duns #:**  
602666922



**Contract Holder**  
GS-07F-0611X



**NOTE:** To download the most current cut-sheets from  
[www.oaksecurity.com](http://www.oaksecurity.com)  
<http://www.oaksecurity.com/technical-data/>

\*Manufacturers' registered trade names used above are for identification and reference only.



**Oak Security Group, LLC**  
Toll-free: 877-OSG-LOCK

C-102-O

[www.oaksecurity.com](http://www.oaksecurity.com)